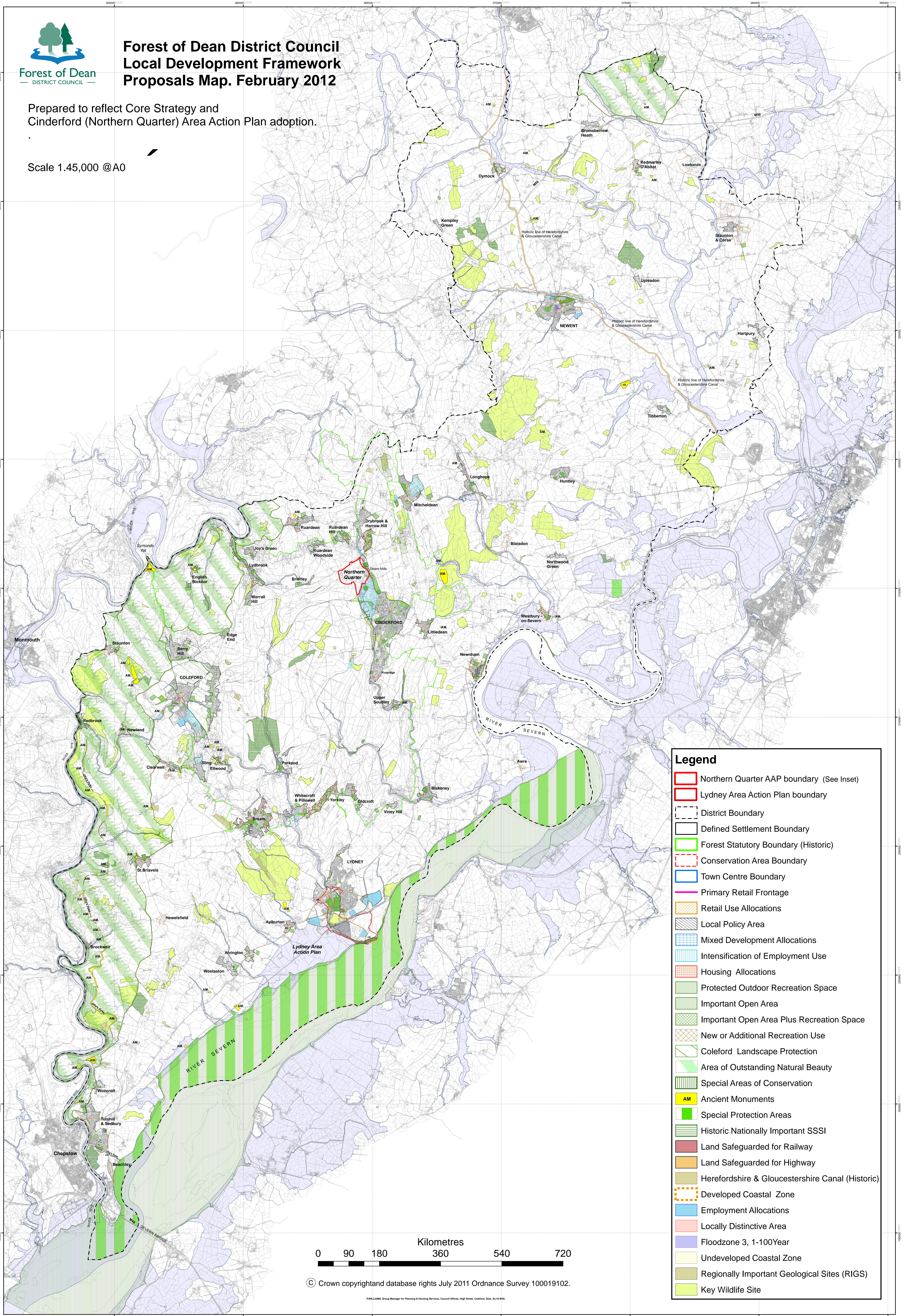




Forest of Dean District Council Local Development Framework Proposals Map. February 2012

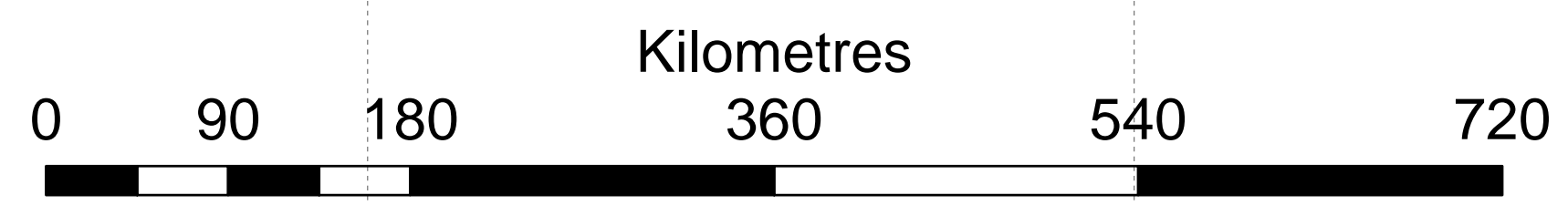
Prepared to reflect Core Strategy and
Cinderford (Northern Quarter) Area Action Plan adoption.

Scale 1:45,000 @A0



Legend

- Northern Quarter AAP boundary (See Inset)
- Lydney Area Action Plan boundary
- District Boundary
- Defined Settlement Boundary
- Forest Statutory Boundary (Historic)
- Conservation Area Boundary
- Town Centre Boundary
- Primary Retail Frontage
- Retail Use Allocations
- Local Policy Area
- Mixed Development Allocations
- Intensification of Employment Use
- Housing Allocations
- Protected Outdoor Recreation Space
- Important Open Area
- Important Open Area Plus Recreation Space
- New or Additional Recreation Use
- Coleford Landscape Protection
- Area of Outstanding Natural Beauty
- Special Areas of Conservation
- Ancient Monuments
- Special Protection Areas
- Historic Nationally Important SSSI
- Land Safeguarded for Railway
- Land Safeguarded for Highway
- Herefordshire & Gloucestershire Canal (Historic)
- Developed Coastal Zone
- Employment Allocations
- Locally Distinctive Area
- Floodzone 3, 1-100Year
- Undeveloped Coastal Zone
- Regionally Important Geological Sites (RIGS)
- Key Wildlife Site



© Crown copyright and database rights July 2011 Ordnance Survey 100019102.

PWILLIAMS, Group Manager for Planning & Housing Services, Council Offices, High Street, Cinderford, G65 1LH, UK.