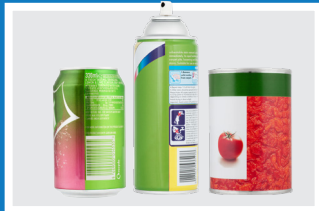
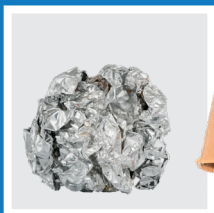


Your recycling and waste services explained

Recycling more of your household waste from the kerbside



Overview of service

Forest of Dean District Council offers the following waste and recycling services:

- Weekly collection of dry recycling (includes: paper, cardboard, tins, cans, foil, empty aerosols, plastic bottles, glass jars and bottles, textiles plus small electrical appliances and household batteries)
- Weekly food waste recycling
- Fortnightly refuse collection
- Residents can also opt in to our charged for garden waste service, collected each fortnight

We normally collect your refuse, recycling, food waste and any small appliances and household batteries on one week and garden waste (if subscribed), recycling and food waste on the other week.



Please ensure you present all of your containers at the kerbside by 7am on your collection day

You can find out what days your collections are due by visiting: www.fdean.gov.uk/binday

Food waste

Simply line your grey kitchen caddy with compostable bags or newspaper. Alternatively, you can use old plastic supermarket carrier bags, bread and sandwich bags. Once your kitchen caddy is full, transfer the contents to your black outdoor caddy. Food waste is not accepted in the garden waste bins.



Need containers? Order online at www.fdean.gov.uk

Collected weekly

Plastic bottles and tins/cans

Use one box to recycle plastic bottles, food tins, drink cans, clean foil, metal lids, metal chocolate and biscuit tins and empty aerosols.



NO THANKS X Other metal objects X Plastic punnets, trays, pots and tubs X Crisp packets X Paper coffee/beverage cups X Plastic film/wrappers/bags X Pet food pouches X Cartons

Wash and squash plastic bottles and drink cans to give you room to recycle more.

Please remove triggers before recycling the bottle



No Thanks

We only accept plastic bottles. Do not use the kerbside service for other types of plastic (such as margarine tubs, yoghurt pots, ready-meal trays and fruit punnets).

Cartons (Tetra Pak) cannot be recycled using the kerbside service but can be recycled at some of our local recycling bank sites: www.fdean.gov.uk/recyclingsites

Have we missed you? Report missed collections by 3pm on the next working day. Report online at www.fdean.gov.uk

Glass and textiles/shoes

Use a second recycling box to recycle your glass bottles and jars as well as textiles and shoes.



NO THANKS X Broken glass X Toughened glass (i.e. glass panes, Pyrex) X Drinking glasses/tumblers X Lightbulbs
X Fluorescent tubes

Textiles and shoes must be bagged. Please use an old carrier bag or similar and tie bag handles to keep them clean and dry. Place the bag inside your recycling box. We cannot accept large sacks of clothes due to space on the vehicle.



NO THANKS X Wet textiles X Heavily soiled fabric (oily rags etc)
X Pillows X Duvets X Cushions X Rugs and carpets

We accept a wide range of textiles including:
Clothing, hats, gloves, belts, scarves and handbags

Don't forget to continue to support your local charity shops and the great work they do. Unwanted textiles can also be recycled in our clothing and shoe banks.

Small electricals and batteries

Small electrical and electronic appliances and household batteries must be presented in a standard supermarket sized carrier bag or smaller (provided by the householder) and placed on top of your black bin on refuse day.

Your electricals and batteries are stored in a separate compartment on the refuse vehicle ready for recycling.

Use your carrier bag to present: kitchen appliances, home appliances, personal care/grooming appliances, children's toys, mobile and digital phones, cameras, games consoles, tablets, e-readers, fairy lights, electrical cables and chargers.

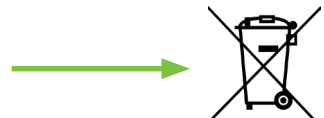
We also accept household batteries such as AAA, AA, C, D, 9v, button, mobile and laptop batteries.



**NO THANKS X TVs and monitors X Lightbulbs X Fluorescent tubes
X Large appliances X Car or motorbike batteries**

Please do not put out larger appliances for collection as these cannot be collected on the vehicle.

Look out for the crossed out wheeled bin symbol on your appliance. This indicates that the item should not be disposed of in the black refuse bin.



Cardboard and paper

Use your blue bag to recycle paper, envelopes, catalogues, newspapers and magazines, brown corrugated card (remove tape), grey and white card and plain greeting cards. All paper and cardboard **MUST** be contained within the blue bag for it to be collected.



NO THANKS X Packaging tape X Cartons
X Polystyrene X Cards with glitter, foil and ribbon

Collected
weekly

You can write your house name or number on your bag.
Cardboard presented outside the bag will be left.

Recycling banks and Household Recycling Centre

Residents who have extra recycling can use one of the district's recycling sites. Find your nearest banks at: www.fdean.gov.uk/recyclingsites

If you have excess household waste, garden waste, recyclables or large items you can take them to Gloucestershire County Council's Household Recycling Centre at Oak Quarry (on the B4226, GL16 7EG).

You must pre-book your visit at: www.gloucestershirerecycles.com

To find out more about what you can recycle at the Household Recycling Centre visit:  www.gloucestershirerecycles.com

Bulky waste

We also offer a bulky waste collection service for larger items such as white goods, mattresses, dining room furniture and large electrical items for a small charge. To book a collection and for more information please visit: www.fdean.gov.uk/bulkywaste or call **01594 810000**



Garden waste

Garden waste is only collected from properties which have paid to receive this service. The subscription charge is a fixed price for 12 months and collections are made each fortnight.

Kerbside garden waste collections are a convenient way to dispose of your garden waste - such as grass cuttings, plants, leaves and hedge prunings.



- YES PLEASE** ✓ Lawn cuttings ✓ Tree and hedge prunings
- ✓ Garden plants and weeds ✓ Leaves, twigs and bark
- ✓ Small amounts of herbivore pet (e.g.hamster or rabbit) bedding
- ✓ Christmas trees (please reduce to 1m or smaller)
- ✓ Small amounts of windfall fruit (this is not classed as food waste)

NO THANKS X Soil, rubble and stones X Paper
X Dog faeces X Cardboard X Food waste



Visit www.fdean.gov.uk/garden-waste to subscribe

Refuse (non-recyclable)

Refuse must be presented inside your council-issue black wheeled bin. You cannot put out your own sacks for collection. Rubbish left either beside or on top of the bin will not be collected.

Households with six or more occupants or that can demonstrate a genuine need, may request an additional bin (subject to assessment).

Properties that cannot accommodate a wheeled bin (such as flats) are supplied with 80 beige council-issue refuse sacks each year or given access to a communal bin.

Additional refuse? You can purchase beige refuse sacks from us for times when you may have extra non-recyclable waste. Only council-issue sacks may be put out for collection.



Allow hot ashes to cool before placing in your bin. For the safety of the crew, make sure the lid of your bin is fully closed.

NO THANKS X Garden waste X Items which can be recycled at the kerbside (including food waste) X Liquids (i.e. paint, oil)
X Trade waste (even if you operate a business from home)
X Building waste, rubble, soil or plasterboard

Need more information?



01594 810000



customer.services@fdean.gov.uk



www.fdean.gov.uk



Printed on 100% recycled paper

www.heidelberg.com/CO2_210504