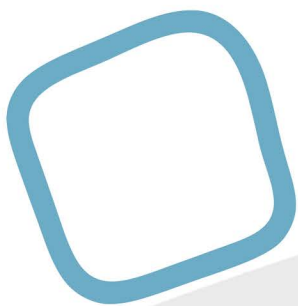




FOREST OF DEAN BIOSPHERE

The logo is a visual representation of the harmonious relationship between the natural elements sky, land, and water that define the Forest of Dean. Its design features flowing, organic shapes that evoke the fluidity and interconnectedness of nature.

At the heart of the logo is a series of interwoven rings, each symbolising a vital component of the environment:



The blue circle represents water, specifically the River Severn and River Wye, which frame the Forest of Dean and give rise to the concept of the area being “land between two rivers.” This circle also reflects the sky above, highlighting the significance of clean air and atmospheric health in sustaining life.



The green ring symbolises the forest itself, capturing the richness of biodiversity and the ecological vitality of the region. It speaks to the lush vegetation, wildlife habitats, and the broader environmental stewardship that the biosphere promotes.



The brown ring denotes the land and its unique geological features. It represents the soil, rock formations, and the foundational earth that supports both natural ecosystems and human activity.

These rings are not isolated; they are interwoven to illustrate the deep interdependence between these elements. Their overlapping forms convey the idea that water, air, land, and biodiversity are not separate entities but part of a unified system that must be protected and nurtured together.

At the centre of the logo, a tree gracefully arches over a human figure gazing into the distance, while a bird soars overhead. This central motif symbolises the intrinsic connection between people and the environment. It reflects the role of the biosphere in fostering this relationship encouraging reflection, collaboration, and a shared commitment to building a sustainable future. The tree represents growth and resilience, the person embodies human curiosity and responsibility, and the bird signifies freedom and the thriving of nature when ecosystems are in balance.

Together, the elements of the logo serve as a powerful visual metaphor for the mission of the biosphere: to inspire and support a collaborative journey toward environmental sustainability, rooted in the interconnectedness of all living and non-living systems.